

MAX³ Individual Components

To configure your solution you must select a Knuckle, a Device Plate and a Base Plate

Item No.	Description	Weight	Height	Width	Depth
Knuckles					
7160-0286	Small Knuckle (holds up to 1 lb.)	0.25 lbs	3.62"	2.75"	1.26" diameter
7160-0287	Medium Knuckle (holds up to 3 lbs.)	0.45 lbs	4.0"	3.38"	1.54" diameter
7160-0288	Large Knuckle (holds up to 7 lbs.)	0.95 lbs	5.0"	3.88"	2.05" diameter
Extensions					
7160-0289	50mm Extension	0.05 lbs	2.0"	NA	1.0" diameter
7160-0290	100mm Extension	0.15 lbs	4.0"	NA	1.0" diameter
7160-0291	150mm Extension	0.20 lbs	6.0"	NA	1.0" diameter
Thread Adapter					
14145	Thread Adapter to connect extension to base plate	0.05 lbs	1.0"	NA	0.77" diameter
Device Mounting Plates					
14139	75mm VESA plate	0.20 lbs	0.88"	3.75"	3.75"
14140	100mm VESA plate	0.25 lbs	0.88"	4.75"	4.75"
14144	Round Plate (NEC and AMPS)	0.10 lbs	0.88"	NA	2.38" diameter
Base Plates					
14144	Round Plate	0.10 lbs	0.88"	NA	2.38" diameter
14146	Quick Release Round Plate	0.30 lbs	1.25"	NA	2.50" diameter
7160-0440	Pole Mount Plate	0.50 lbs	4.12"	2.75"	1.87"
14649	Suction Cup	0.80 lbs	2.0"	NA	4.75" diameter



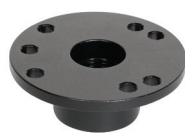
7160-0287



7160-0290



7160-0440



14144



14139



14145



14146



14140

With an all metal construction, all axes movement and ability to hold a wide range of devices, MAX³ is more versatile, more durable and more flexible.

- Numerous mounting plate designs for device adaptation – use with ultramobile PCs, handheld devices, PDAs, smartphones and scanners, telematics and more
- All metal construction (anodized aluminum) will not deform or degrade
- MIL-810F tested
- Quick adjust handle for easy adjustment to position the device at the desired angle
- All axes range of motion in X axis (left/right), Y axis (front/back) and Z axis (up/down)
- Multi-Configurable - extension tubes of various lengths work to achieve desired reach
- Encapsulated ball design offers theft deterrence

mymax3.com

Every gadget needs me.



Follow us on:

3001 Borham Ave
Stevens Point, WI 54481
Phone: 877-412-6583
Fax: 715-344-8845