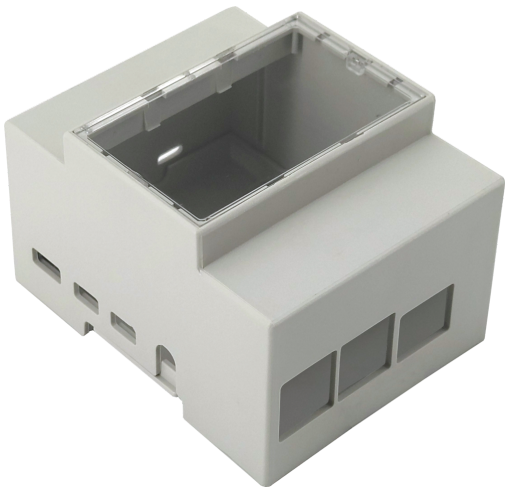


RB-CASEP4+07

Din Rail Case - for Raspberry Pi 4 B



With this plastic case, you can easily mount your Raspberry Pi 4 B to a DIN rail and connect it with other devices. It has space for additional components and has holes for all interfaces so that you can work with your Raspberry Pi 4 B without obstacles. Further, it comes with a detachable, transparent Panel which enables you a quick access, too.

KEY FEATURES

Material	Polyphenylene ether, UL94V0, self-extinguishing
Color	white/grey
Assembly	on a DIN rail
Special features	Space for additional components, transparent, detachable panel, Cut-outs

ADDITIONAL INFORMATION

Dimensions	91 x 72 x 62 mm
Weight	58
Items Shipped	plastic Din rail case
EAN	4250236819617
Tariff No.	8473308000