

# Xerox® DocuMate® 4760

## Price and Performance Leader in its Class

- 60 ppm in simplex and 120 ipm in duplex\*
- 150 pages ADF capacity\*\*
- Scans documents up to A3 (11" x 17") size
- Ultrasonic Double Feed Detection®
- Perfect scans from imperfect originals
- One touch scanning to multiple applications including Xerox® DocuShare® and Microsoft® SharePoint®

\* at 300 dpi black & white, grayscale, color, also up to 80 ppm/160 ipm at 200 dpi black & white & grayscale

\*\* 20 lb. paper (75-80 g/m<sup>2</sup>)

### Xerox® DocuMate® 4760

The Xerox® DocuMate® 4760 delivers high-quality production scanning to any organization, at an affordable price. With its powerful combination of image quality, easy-to-use features and fast scanning speeds, it is the perfect solution for businesses looking to achieve high levels of flexibility within a low-volume production scanning environment. The DocuMate 4760 scans documents at 60 ppm (simplex) and 120 ipm (duplex) at 300 dpi in color, grayscale, and black & white modes. It also includes a 150-page capacity Automatic Document Feeder (ADF), has the ability to scan a wide range of mixed document sizes (up to A3 / 11" x 17") and supports long document scanning up to 38" (965 mm).

### Total Flexibility

You don't always know what documents you will need to scan next. You might have clean laser-quality pages today, but tomorrow there maybe multi-colored forms, A3 documents or even long legal forms. The DocuMate 4760 can handle it all with ease. The 150-page ADF makes short work out of any stack of paper of varying size, and it scans with a black background to facilitate a wide range of cropping techniques.

### Powerful Technology

The DocuMate 4760 is powered by technology to scan documents to up to 9 preset, yet completely configurable, destinations. This enables your document to be scanned with the correct settings for resolution, color, duplex, auto-crop, auto-straighten, file format and then delivered to virtually any application, folder or device. Imagine the workflow possibilities of delivering perfectly-scanned paper documents in a searchable PDF format to email, Xerox DocuShare or a custom web application for your enterprise—all at the touch of a button. Not only is this a great productivity gain but it greatly reduces the training requirements for scanner users, further helping your return on investment.

### Intelligent Productivity

Ultrasonic Double Feed Detection is built into the DocuMate 4760 so you'll never miss a page due to a misfeed or a stapled document going through the scanner.

The DocuMate 4760 offers a professional software package, together with advanced TWAIN™ and ISIS® drivers, to enable communication with advanced electronic content management (ECM) software applications. Productivity has never been so easy or affordable. The DocuMate 4760 is as serious as you are about scanning.

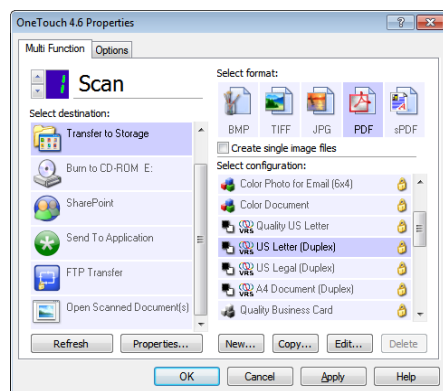


# Xerox® DocuMate® 4760 Software Solutions

## Visioneer® OneTouch®

Visioneer OneTouch is an easy to use utility that connects the buttons on the Xerox® DocuMate® scanner with a powerful set of scanner settings to greatly improve the efficiency of your workflow—so that with one touch, the document is scanned automatically to email, Microsoft® Word, your printer, or simply a file folder.

In addition to scanning direct to all popular destinations, Visioneer OneTouch also links



the DocuMate 3460 with industry-leading document management software, such as Microsoft Sharepoint®, DocuWare and Xerox® DocuShare®—forming an easy to use workflow from paper to a selected destination. A Software Development Kit (SDK) is also available which provides the ability to develop specific links and integrate them into the Visioneer OneTouch control panel quickly and easily.

## Choose Kofax® VirtualReScan® (VRS) Basic or Pro

Visioneer OneTouch with Kofax VRS technology is an integrated software solution that combines the ease of Visioneer OneTouch scanning with the superior image quality achieved with Kofax VRS. Kofax VRS is an award winning, patented technology that automatically insures the best possible image quality and OCR accuracy for scanned document images. As pages pass through the scanner, VRS performs a multipoint inspection of each document, instantly checking and adjusting alignment (skew), brightness, contrast, and image clarity.



## Nuance® OmniPage®Pro

Provides a precise OCR and layout retention solution, quickly turning scanned documents into editable, formatted text. The text can then be used in virtually any word processing, desktop publishing or web publishing program.

## Text Searchable PDF

Transform volumes of paper or photos into organized digital files that can be quickly found, used and shared. In PDF format, the user can instantly search documents for keywords or phrases. This provides additional archival benefits beyond traditional storage, and the widely accepted PDF format lets everyone view and print documents—on any computer.

Xerox® DocuMate® 4760 Product Specifications	
Model Number (VRS Basic)	XDM47605M-WU
Model Number (VRS Pro)	XDM47605M-WU/VP
Scan Speed	60 ppm simplex / 120 ipm duplex at 300 dpi, Color, grayscale or black & white 80 ppm simplex / 160 ipm duplex at 200 dpi, grayscale or black & white
Scan Method	Fast Duplex ADF (Automatic Document Feeder)
Imaging Sensor	Dual CCD (Charge Coupled Device)
Background	Black
Detection	Ultrasonic Double Feed Detection
Optical Resolution	600 dpi
Output Bit Depth	24-bit color, 8-bit grayscale, 1-bit black & white
Interface	Hi-Speed USB 2.0 (USB 1.1 compatible)
Dimensions	16.8" x 10.9" x 8.6" (427 x 277 x 218 mm)
Weight	19.8 lb. (9 kg)
ADF Maximum Document Size	11.7" x 38" (297 x 965 mm)
ADF Minimum Document Size	3" x 2" (76 x 51 mm)
Document Weight	7 to 110 lb. (28 ~ 413 g/m²)
ADF Capacity	150 sheets (20 lb., 75-80 g/m² paper)
Duty Cycle	5,000 pages/day

For more information about the Xerox line of scanners, visit [www.xeroxscanners.com](http://www.xeroxscanners.com)



## Minimum System Requirements

- Intel® Pentium® 4 or equivalent processor
- Windows® 8 / 7 / Vista® / XP®
- 2GB RAM
- 350 MB available hard drive space
- DVD-ROM drive
- USB 2.0 port

## Contents

- DocuMate 4760 Scanner
- Power Supply
- USB 2.0 Cable
- Quick Install Card
- Technical Support Card
- Paper Input & Output Trays
- DVD-ROM including:
  - User's Manual
  - Kofax VRS
  - Nuance OmniPage Pro
  - Visioneer® OneTouch® with Kofax VRS technology
  - Scanner Drivers: TWAIN, EMC Captiva ISIS®, Microsoft Windows Image Acquisition (WIA)